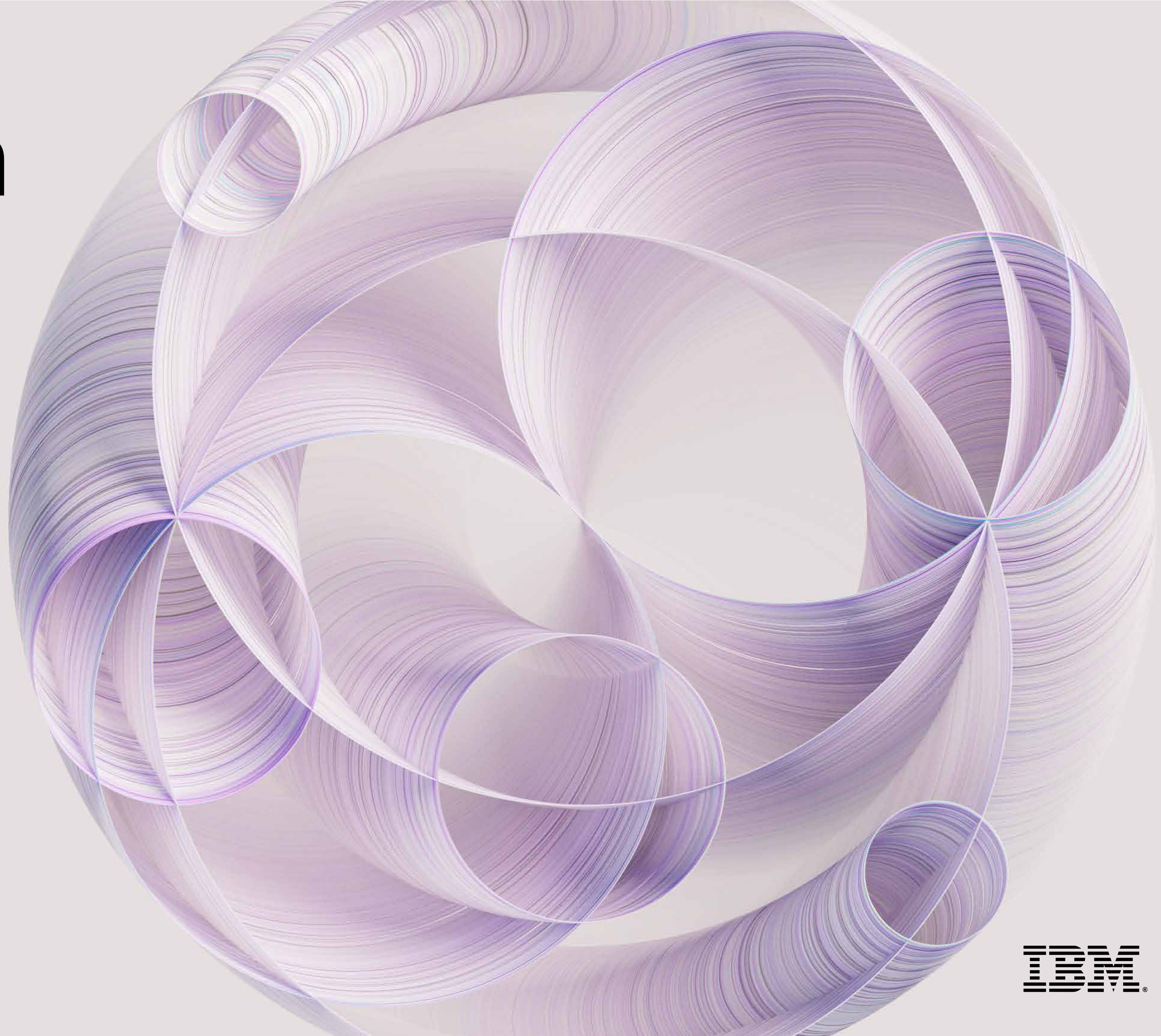


AI on IBM Power:

The platform built for AI.

—
Client References
Pathology

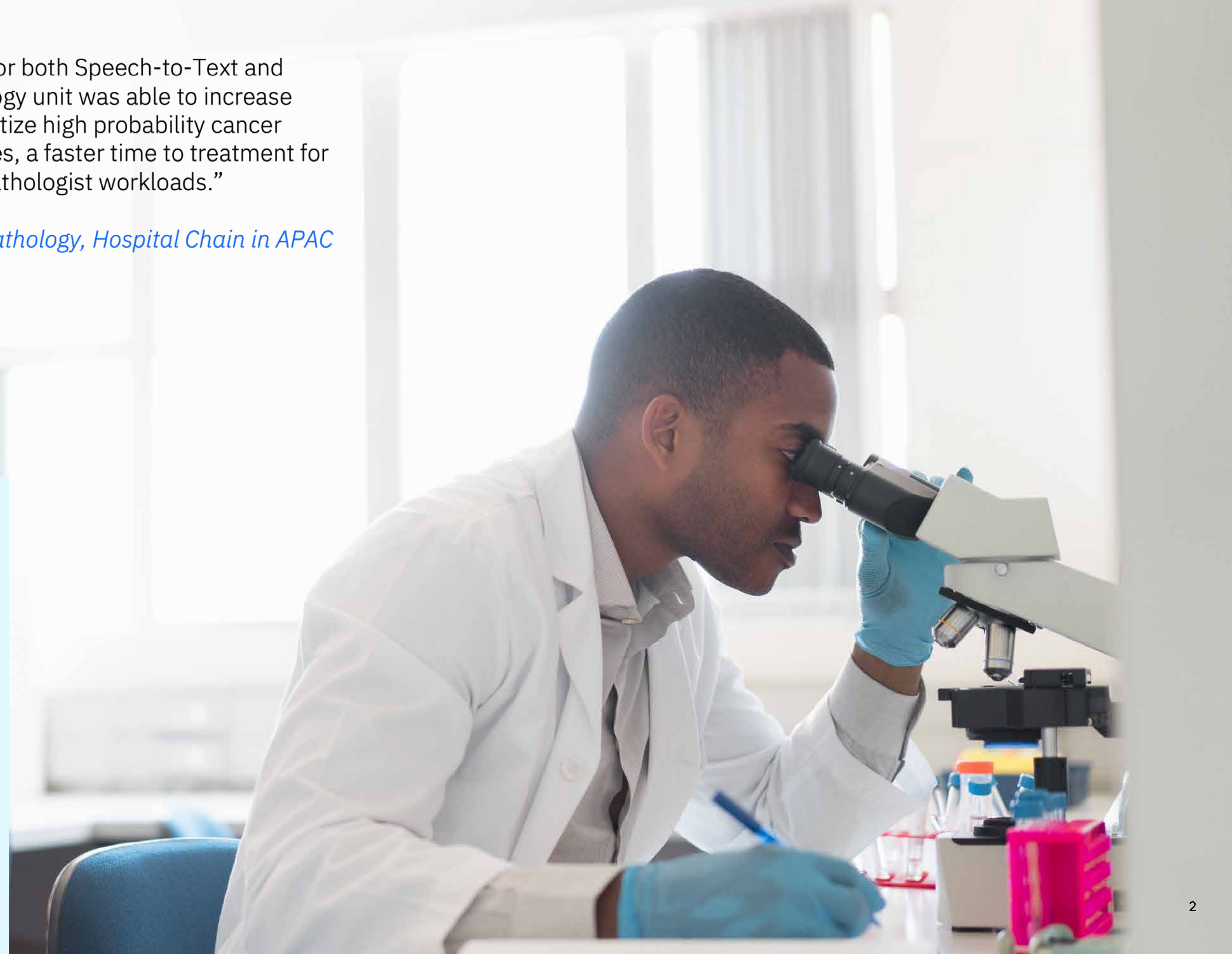


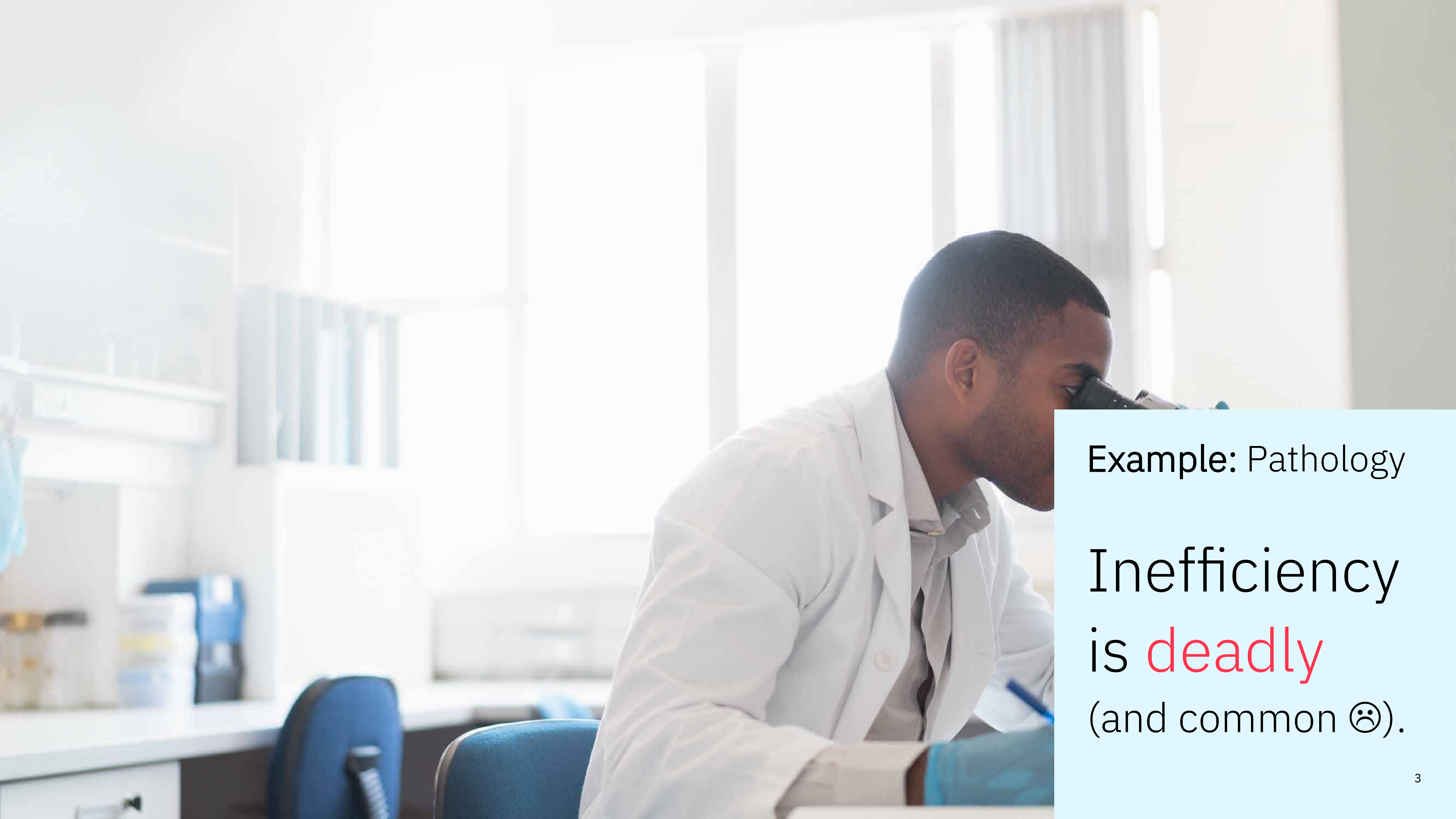
“By deploying an AI inference solution for both Speech-to-Text and Image analysis on Power10, the pathology unit was able to increase sensitivity in detecting lesions and prioritize high probability cancer cases, leading to better clinical outcomes, a faster time to treatment for patients, and an efficient reduction in pathologist workloads.”

Head of Pathology, Hospital Chain in APAC

Example: Pathology

Trust is key.



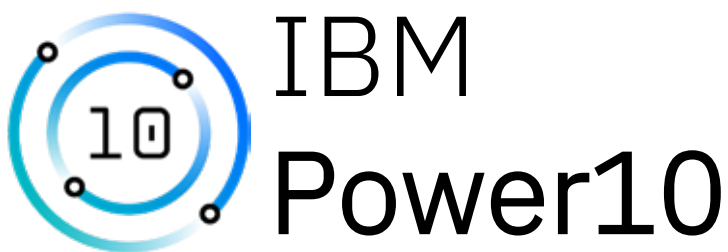


Example: Pathology

Inefficiency
is **deadly**
(and common ☹).

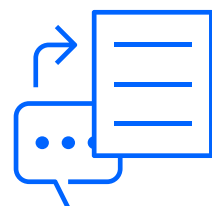
A hospital in APAC

leverages AI on IBM Power10 to automate manual pathology processes to help more patients in time.



Manual
Form
Filling

from
minutes to
seconds

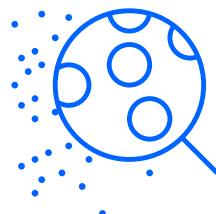


AI for
Speech-to-
Text



Manual
Image
Analysis

from **two**
weeks to
a **few days**

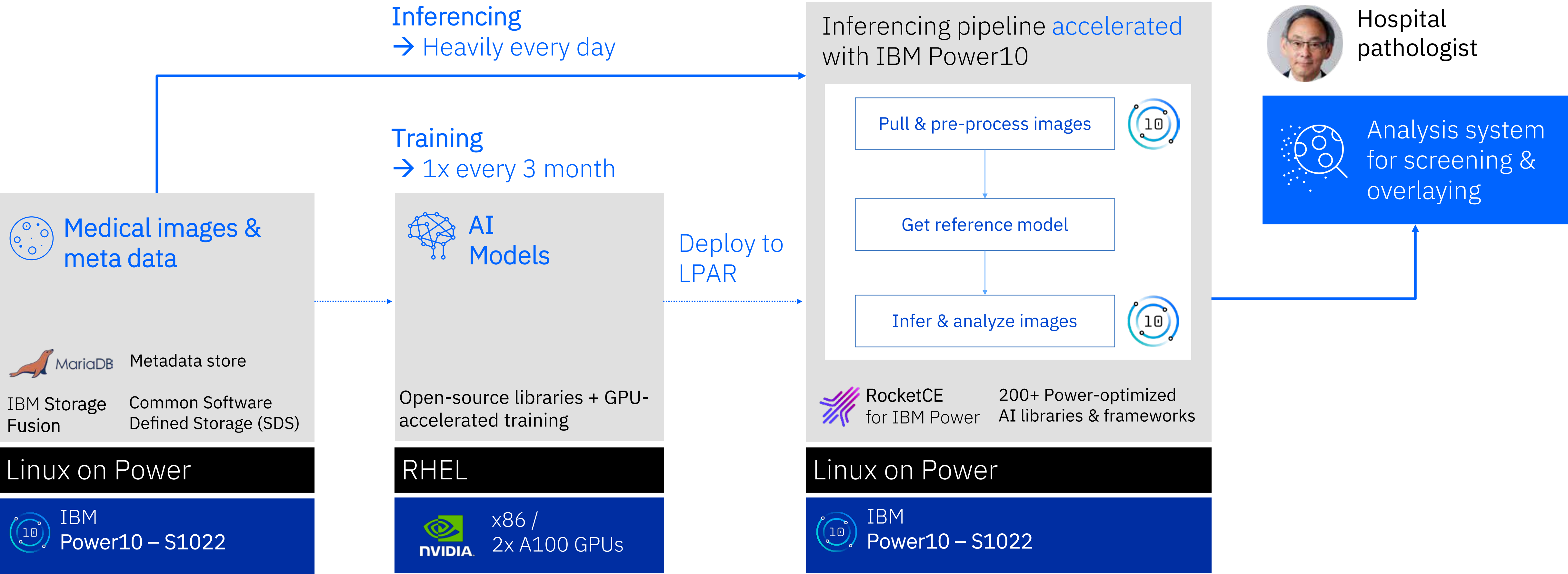


AI for
Screening &
Overlaying

25% faster inference at lower costs
compared against x86 server with NVIDIA T4
GPUs and double precision inferencing.

A hospital in APAC: Architecture

Multi-architecture solution with training deployed on x86 and inferencing on IBM Power10 with low latency & low costs.



Thank you

To learn more, contact your IBM Business Partner:

Redes y Sistemas Integrados

+57 3156125989 | mercadeo@redsis.com

www.redsis.com

© 2023 International Business Machines Corporation

All rights reserved. The information contained in these materials is provided for informational purposes only and is provided AS IS without warranty of any kind, express or implied. Any statement of direction represents IBM's current intent, is subject to change or withdrawal, and represent only goals and objectives. IBM, the IBM logo, and Power are trademarks or registered trademarks of International Business Machines Corporation, in the United States and/or other countries. Other product and service names might be trademarks of IBM or other companies. A current list of IBM trademarks is available on ibm.com/trademark.

